

# Blood from Stone

Charlie Barber

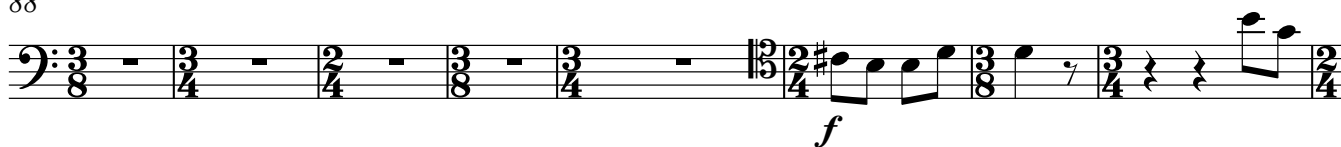
♩ = 96

<b>A</b>	Ob. 1
----------	-------

[illegible]

## Violoncello

88



96



103



## 2. Perspective

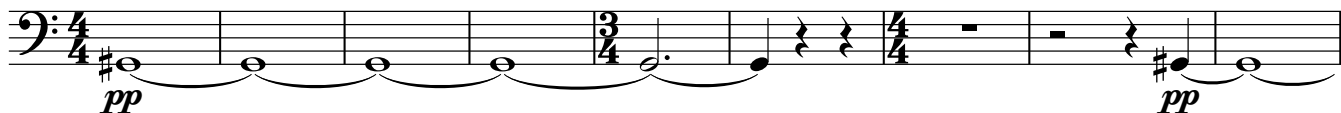
## Tranquillo

$\text{♩} = 60$

**F**

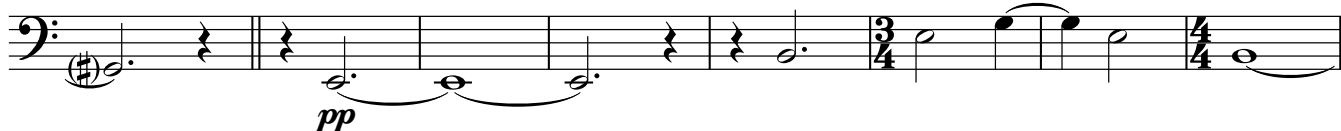
109

non vib.



118

**G**



126

**H**



133

**I**



140

2



Violoncello

149 **J**

*pp*

157 **K**

*pp*

165

*pp*

3. Releasing the sculpture

**Allegro, con energico**

$\text{♩} = 120$

172 **L**

*f* *energico*

177

*cresc.* *f*

181 **M**

*mf*

188 **N**

*cresc.* *f*

192

*cresc.* *f*

196 **O**

*f* *mf*

## Violoncello

203 **P**

*mf* *cresc.* *f*

208

212 **Q**

*mf*

218 **R**

*cresc.* *f*

223

227 **S**

231

*p*

237 **T**

*f*

241

*cresc.*

245 **U**

*mf* *cresc.* *f*

The image displays a page of a musical score for the cello part of 'Blood from Stone' by Charlie Barber. The page is numbered '4' in the top left corner. The title 'Charlie Barber - Blood from Stone' is centered at the top, with 'Violoncello' centered below it. The score consists of nine staves of music, each beginning with a measure number and a letter in a box (P, Q, R, S, T, U). The music is written in various time signatures including 3/4, 2/4, 4/4, and 3/2. Dynamic markings such as *mf*, *f*, *p*, and *cresc.* are placed throughout the score. Performance instructions like triplets (indicated by a '3' in a bracket) and accents (indicated by a 'v' symbol) are also present. The notation includes eighth, sixteenth, and thirty-second notes, as well as rests and slurs.

Violoncello

253 V

*f*

258 W

*ff* *cresc.* *3*

262 *f*

267 X *mp*

272 Y *mf* *cresc.* *f* *mf*

278

283 Z *cresc.* *f*

287

291 *cresc.* *3* *ff*